

Anti-5-HT5A Antibody
Rabbit polyclonal antibody to 5-HT5A
Catalog # AP61351**Specification**

Anti-5-HT5A Antibody - Product Information

Application	WB, IF/IC
Primary Accession	P47898
Reactivity	Human, Rat
Host	Rabbit
Clonality	Polyclonal
Calculated MW	40255

Anti-5-HT5A Antibody - Additional Information**Gene ID** 3361**Other Names**

5-hydroxytryptamine receptor 5A; 5-HT-5; 5-HT-5A; 5-HT5A; Serotonin receptor 5A

Target/Specificity

Recognizes endogenous levels of 5-HT5A protein.

Dilution

WB~~WB (1/500 - 1/1000), IF/IC (1/100 - 1/500)

IF/IC~~N/A

Format

Liquid in 0.42% Potassium phosphate, 0.87% Sodium chloride, pH 7.3, 30% glycerol, and 0.09% (W/V) sodium azide.

Storage

Store at -20 °C. Stable for 12 months from date of receipt

Anti-5-HT5A Antibody - Protein Information**Name** HTR5A ([HGNC:5300](#))**Function**

G-protein coupled receptor for 5-hydroxytryptamine (serotonin), a biogenic hormone that functions as a neurotransmitter, a hormone and a mitogen (PubMed:35610220, PubMed:35835867, PubMed:9865521). Also functions as a receptor for ergot alkaloid derivatives and other psychoactive substances (PubMed:35835867). Ligand binding causes a conformation change that triggers signaling via guanine nucleotide-binding proteins (G proteins) and modulates the activity of downstream effectors (PubMed:<a

[35610220](http://www.uniprot.org/citations/35610220), PubMed:<[35835867](http://www.uniprot.org/citations/35835867)>, PubMed:<[9865521](http://www.uniprot.org/citations/9865521)>). HTR5A is coupled to G(i)/G(o) G alpha proteins and mediates inhibitory neurotransmission: signaling inhibits adenylate cyclase activity and activates a phosphatidylinositol-calcium second messenger system that regulates the release of Ca(2+) ions from intracellular stores (PubMed:<[35610220](http://www.uniprot.org/citations/35610220)>, PubMed:<[35835867](http://www.uniprot.org/citations/35835867)>, PubMed:<[9865521](http://www.uniprot.org/citations/9865521)>).

Cellular Location

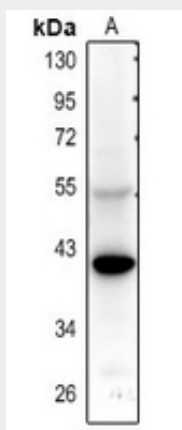
Cell membrane; Multi-pass membrane protein

Anti-5-HT5A Antibody - Protocols

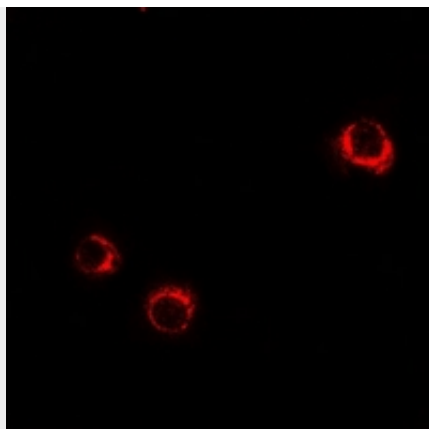
Provided below are standard protocols that you may find useful for product applications.

- [Western Blot](#)
- [Blocking Peptides](#)
- [Dot Blot](#)
- [Immunohistochemistry](#)
- [Immunofluorescence](#)
- [Immunoprecipitation](#)
- [Flow Cytometry](#)
- [Cell Culture](#)

Anti-5-HT5A Antibody - Images



Western blot analysis of 5-HT5A expression in rat kidney (A) whole cell lysates.



Immunofluorescent analysis of 5-HT5A staining in LOVO cells. Formalin-fixed cells were permeabilized with 0.1% Triton X-100 in TBS for 5-10 minutes and blocked with 3% BSA-PBS for 30 minutes at room temperature. Cells were probed with the primary antibody in 3% BSA-PBS and incubated overnight at 4 °C in a humidified chamber. Cells were washed with PBST and incubated with a Alexa Fluor 594-conjugated secondary antibody (red) in PBS at room temperature in the dark.

Anti-5-HT5A Antibody - Background

KLH-conjugated synthetic peptide encompassing a sequence within the N-term region of human 5-HT5A. The exact sequence is proprietary.